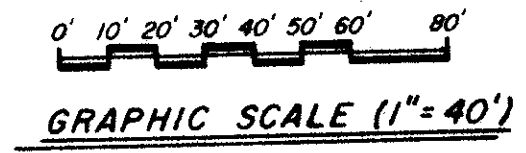


LAKE ARJARO, A CONDOMINIUM

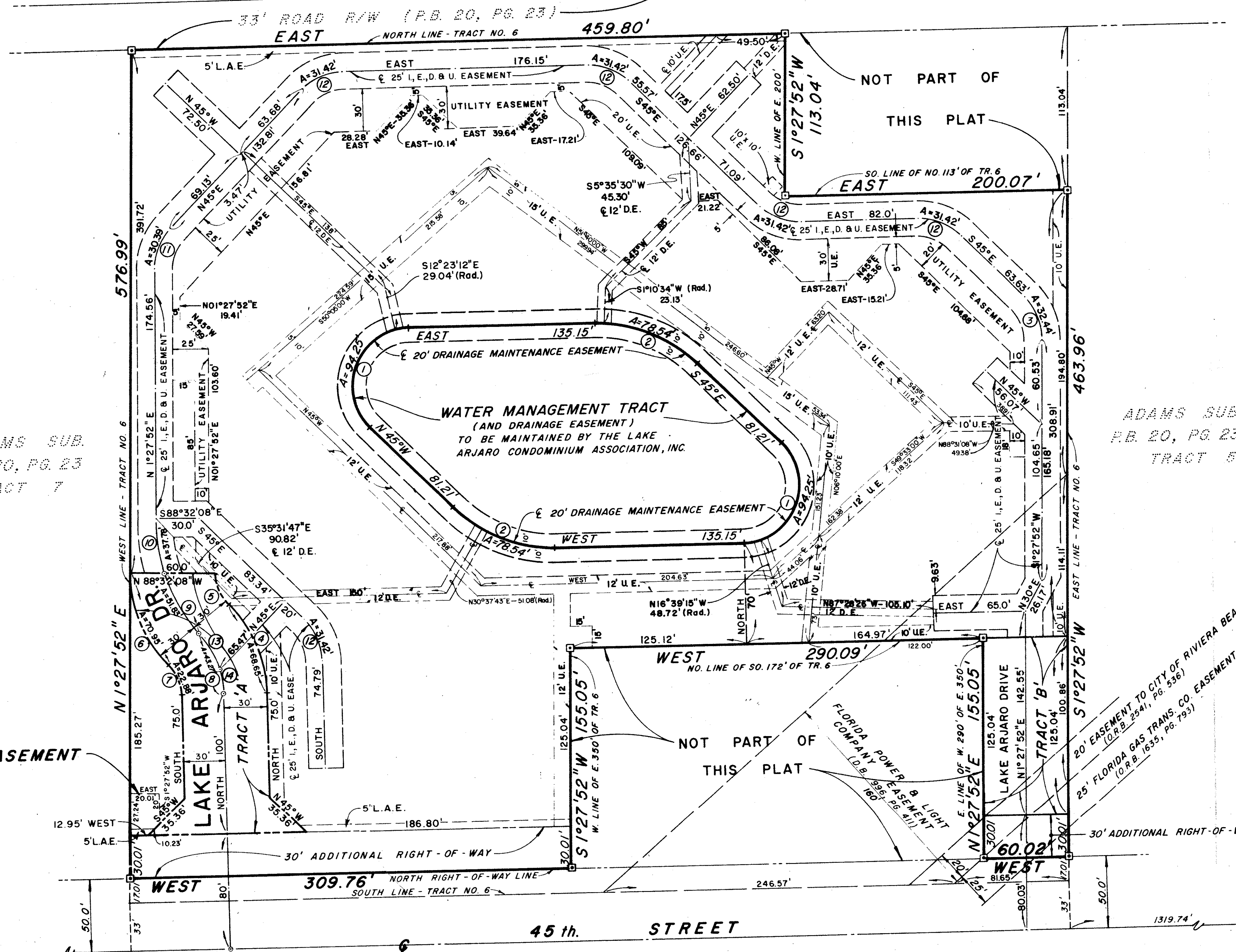
IN TWO SHEETS, SHEET NO. TWO

GRAMERCY PARK UNIT 4, P.B. 28, PG. 76



JANUARY 1984

47/149



CURVE DATA

Curve No.	A	R	Δ
1	94.25'	40'	135°
2	78.54'	100'	45°
3	32.44'	40'	46°27'52"
4	68.65'	90'	43°42'14"
5	23.65'	30'	45°10'06"
6	70.95'	90'	45°10'06"
7	22.88'	30'	43°42'14"
8	43.27'	60'	41°19'14"
9	51.83'	120'	24°44'54"
10	37.78'	120'	18°02'12"
11	30.39'	40'	43°32'08"
12	31.42'	40'	45°
13	27.16'	60'	25°56'01"
14	16.11'	60'	15°23'13"

0395-000

MICHAEL B. SCHORAH & ASSOCIATES, INC.
 ENGINEERS
 PLANNERS
 DEVELOPMENT CONSULTANTS
 1850 FOREST HILL BLVD.
 SUITE 305
 WEST PALM BEACH
 FLORIDA 33406
 PHONE (305) 965-0000

EWING AND SHIRLEY, INC.
land surveyors and planners

LAKE ARJARO 47/149